



ImgConv

Table of Contents

Foreword	0
Part I Introduction, configuration and operation	2
1 Introduction	2
2 Operation	2
3 Setup	3
Part II Other Information	7
1 License	7
2 Getting in Touch with CGI	9
Index	10

1 Introduction, configuration and operation

1.1 Introduction

ImgConv (Image Converter) is a software utility that will automatically convert multiple multi-page tiff (fax) files to multiple single/multi page tiff (fax) files of a different 'flavor'. This application sits in the background and quietly converts incoming files. It can be used in, for example, DIP or fax situations. Thousands of tiff files can be processed daily.

Output: The possible output types are: None, Packbits, Group3 1d, Group3 2d, Group4.

Input: Possible input types can be almost any monochrome tiff file.

De-skew: ImgConv will optionally de-skew pages. This is particularly useful for fax images, where the paper slipped, and the page was therefore crooked.

You can change the settings so that a different 'collection/input' directory is used, the output types, and whether ImgConv breaks multi-page tifs into many single page files. You may also change the frequency which the ImgConv looks for files.

PDF:

If you install GhostScript, ImgConv can use this to convert from PDF files to tiff files.

ImgConv does not use OLE, or any connectivity to any other program on your pc, so you don't need, other software. This makes ImgConv inexpensive and easy to set up. This Auto Batch converter has a very small footprint in memory and disk, this means the performance of your pc should not be greatly affected.

Uses: ImgConv's great for converting incoming faxes from your fax software or legacy system, or converting batches of tiff files from databases. Add image conversion support to your application simply by writing the file to a Windows disk. Add Windows tiff conversion support to legacy DOS apps, even over a network. Even convert from Unix/Linux via Samba - simply copy the file to the remote Windows machine, and ImgConv will do the rest. After converting, Image Converter will delete the source file for you, but will leave the new version. Re-compress, or break apart pages. All automatically!

[CGI Systems](#) makes other products to facilitate other stages of this type of operation, for example we make a batch file printer ([AutoPrint](#)) for tiff, rtf and text files, and also pseudo printer drivers to allow any Windows application to print to monochrome .tif files. Most of these products integrate with our [Deliver](#) messaging product. We also make e-commerce systems and an [encryption utility](#) (Crypter).

1.2 Operation

ImgConv is a software utility that will take files which end in the extensions .tif, or .fax (you can choose any extension) from a specified directory and convert these files to the appropriate new versions as specified in the setup. Once a file is converted it will be deleted. The internal data format of these files must be tiff.

Startup screen:

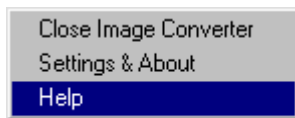


The above window will be displayed for a few seconds prior to ImgConv minimizing and displaying as an icon in the system tray.



It's the small 'fractal' in the picture above.

If you right-click on the fractal, with the mouse you will see the following menu:



These options control the operation of ImgConv.

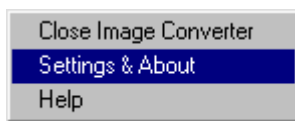
Close Image Converter - Close and stop operation.

Settings & about. Change the way the program processes the various file types.

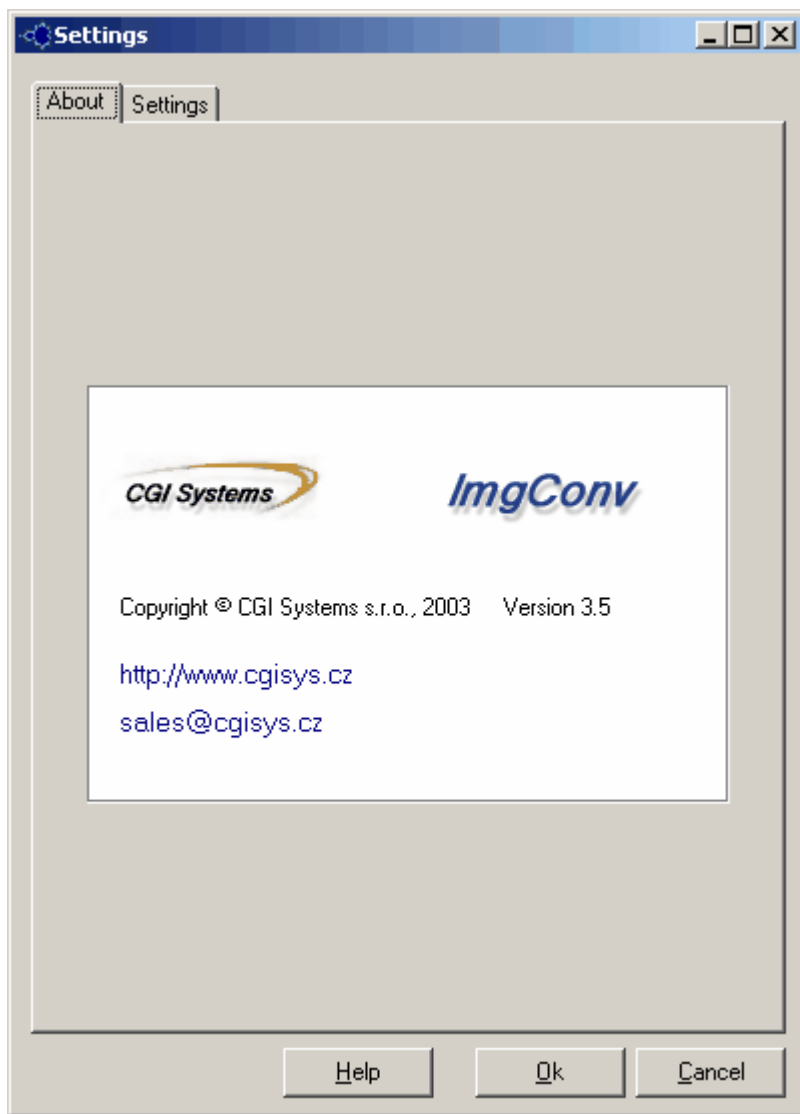
Help - online help - it's what you're reading.

1.3 Setup

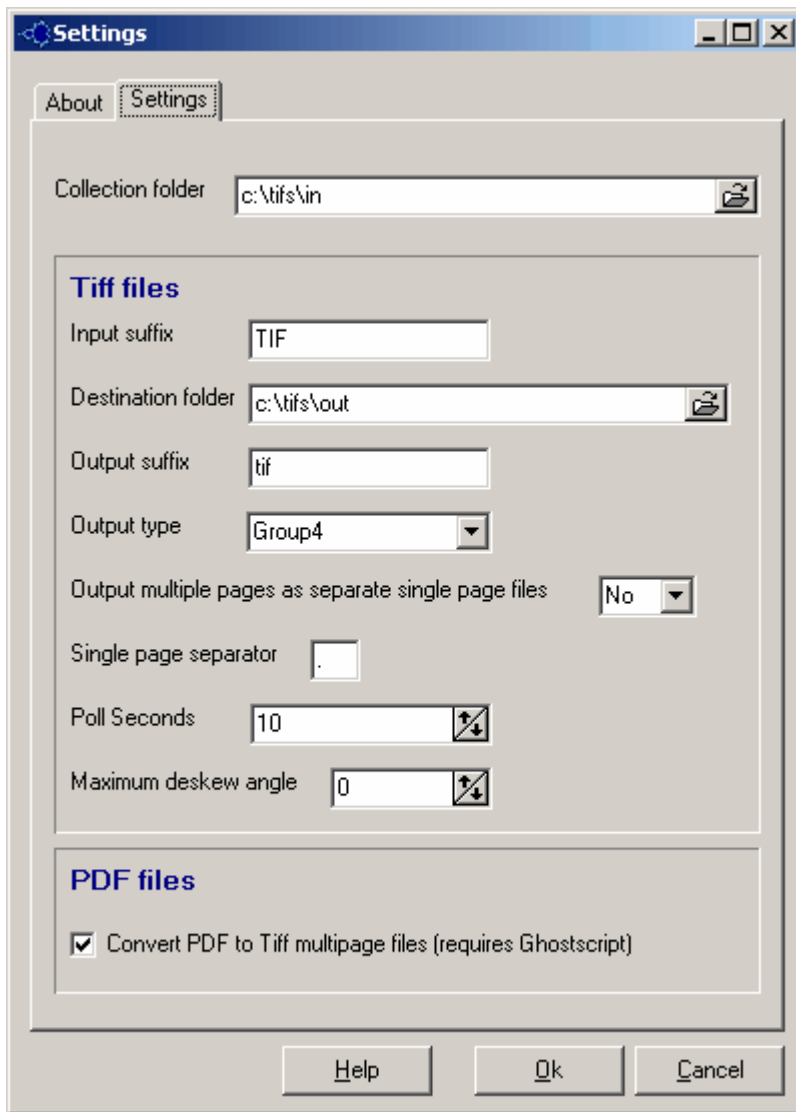
ImgConv allows you to make various changes to its configuration. You may change these settings by right-clicking on the small 'fractal' icon in your task tray, at the bottom right of the screen. Then click on the 'Settings & about' menu option as displayed below:



The **Settings** dialog will appear:



Settings: The second tabbed page of this dialog will display your basic settings:



Collection Folder is where you will 'drop' your tiff files. Do not specify a trailing backslash ('\') at the end of the path. The path 'c:\tifs\in' is the default.

Input Suffix is the extension that input files will use. For example 'tif' (no quotes) would scan for any incoming files. After conversion these would be deleted.

Destination Folder is where ImgConv will 'drop' your converted tiff files. Do not specify a trailing backslash ('\') at the end of the path. The path 'c:\tifs\out' is the default. *If you specify the same folder as the 'Collection folder' you MUST use a different 'Output suffix', otherwise ImgConv will loop forever, re-converting the same file.*

Output Suffix is the extension that output (converted) files will use. For example 'tif' (no quotes) would scan for any incoming files. After conversion these would be deleted. *If you specify the same suffix as for input files you MUST use a different 'Destination folder', otherwise ImgConv will loop forever, re-converting the same file.*

Output type specifies the type of compression that ImgConv will apply to the output file/s. Valid types are:

None - raw raster data

Packbits - format for run-length encoding from Apple.

Group3_1d - (group 3 ID or '1 dimension') This is a typical fax format.

Group3_2d - (group 2 IID or '2 dimension', meaning the run-length (sliding-window) compression extends downwards 2 scanlines) This is a typical fax format.

Group4

Output multiple pages as separate single page files - if set to 'No' you'll get a single output file for each input file, irrespective of the page count - the output file will contain multiple images. If set to 'Yes' you'll get multiple single page output files. For example for the 3 page input file 'source.tif', you'd get:

```
source.001.fax
source.002.fax
source.003.fax
```

if the output suffix was set to 'fax' and the separator was set to '.' as in the screen shot above.

Single page separator. Only used when outputting multiple single page files (splitting files), this is the character used in between the base file name and the sequential page number. The Output suffix follows as the file extension.

Poll Seconds is the number of seconds delay between ImgConv looking for new files in the collection folder. The default is 10, the minimum is 1 and the maximum is 2419200, this being 3 weeks.

Advanced Settings: You may enter an optional maximum deskew angle. If you enter 0, then pages will not be sampled to see whether they are skewed. A value other than 0 indicates that you wish to automatically deskew pages that have from 0 to your maximum deskew angle. Pages that have a greater skew will not be deskewed. A typical maximum deskew angle would be 4 degrees.

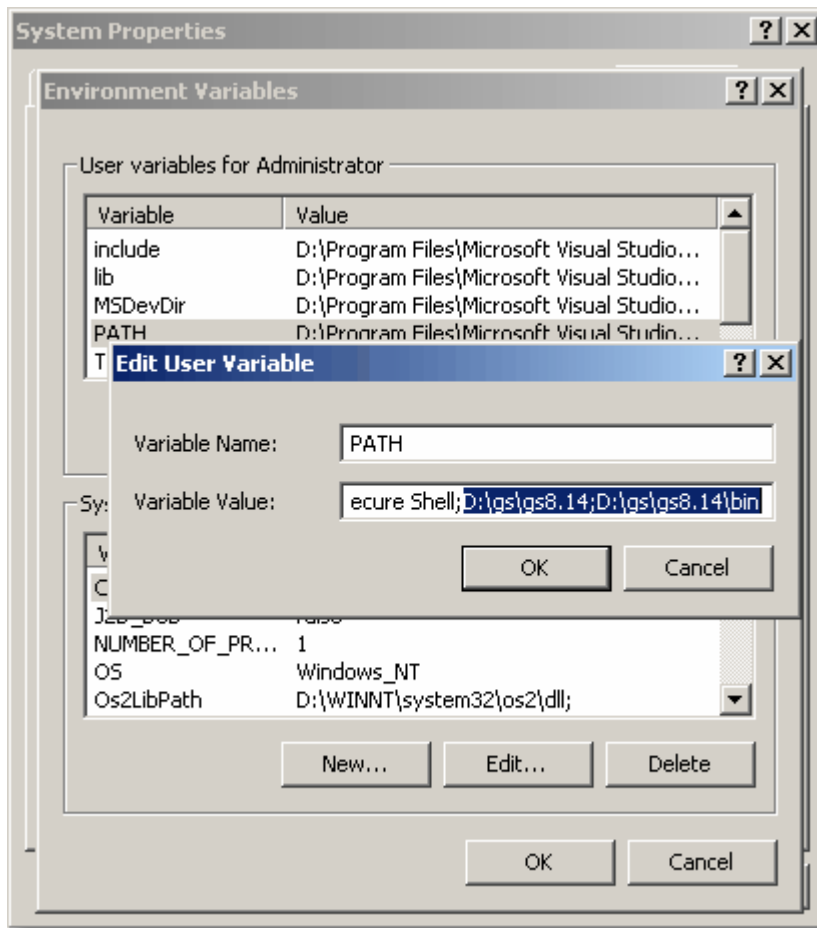
Convert PDF to Tiff. The resultant tiff files are placed into ImgConv's collection folder, ready for further processing.

You need to have installed GhostScript, which you may obtain from:

<http://www.cs.wisc.edu/~ghost/doc/AFPL/get814.htm>

You also need to set the path so that GhostScript's executable can be found. Do this as follows:

Click: Start | Control Panel | System | Environment variables | top box | PATH



then append `D:\gs\gs8.14;D:\gs\gs8.14\bin` (or wherever you installed GhostScript to - make sure the path is correct for the version of GhostScript that you have installed). Use a semi-colon as separator. Remember to add this after the existing path!

Without these paths set `ImgConv` will not be able to find GhostScript and it will not work.

2 Other Information

2.1 License

CGI SYSTEMS s.r.o.

ELECTRONIC END USER LICENSE AGREEMENT

FOR THE 'ImgConv' APPLICATION

NOTICE TO USER:

THIS IS A CONTRACT. BY INSTALLING THIS SOFTWARE YOU ACCEPT ALL THE TERMS AND CONDITIONS OF THIS AGREEMENT.

This End User License Agreement accompanies the lmgConv batch printer product and related explanatory materials ("Software"). The term "Software" also shall include any upgrades, modified versions or updates of the Software licensed to you by CGI Systems. Please read this Agreement carefully. At the end, you will be asked to accept this agreement and continue to install or, if you do not wish to accept this Agreement, to decline this agreement, in which case you will not be able to use the Software.

Upon your acceptance of this Agreement, CGI Systems grants to you a nonexclusive license to use the Software, provided that you agree to the following:

1. Use of the Software.

- You may install the Software on a hard disk or other storage device; install and use the Software on a file server for use on a network for the purposes of (i) permanent installation onto hard disks or other storage devices or (ii) use of the Software over such network; and make backup copies of the Software.
- You may not make and distribute any copies of the Software other than for your own use.

2. Copyright and Trademark Rights. The Software is owned by CGI Systems s.r.o., and its structure, organization and code are the valuable trade secrets of CGI Systems. The Software also is protected by United Kingdom Copyright Law and International Treaty provisions. You may use trademarks only insofar as required to comply with Section 1 of this Agreement and to identify printed output produced by the Software, in accordance with accepted trademark practice, including identification of trademark owner's name. Such use of any trademark does not give you any rights of ownership in that trademark. Except as stated above, this Agreement does not grant you any intellectual property rights in the Software.

3. Restrictions. You agree not to modify, adapt, translate, reverse engineer, decompile, disassemble or otherwise attempt to discover the source code of the Software.

4. No Warranty. The Software is being delivered to you AS IS and CGI Systems make no warranty as to its use or performance. CGI Systems AND ITS SUPPLIERS DO NOT AND CANNOT WARRANT THE PERFORMANCE OR RESULTS YOU MAY OBTAIN BY USING THE SOFTWARE OR DOCUMENTATION. CGI Systems AND ITS SUPPLIERS MAKE NO WARRANTIES, EXPRESS OR IMPLIED, AS TO NONINFRINGEMENT OF THIRD PARTY RIGHTS, MERCHANTABILITY, OR FITNESS FOR ANY PARTICULAR PURPOSE. IN NO EVENT WILL CGI Systems or OR ITS SUPPLIERS BE LIABLE TO YOU FOR ANY CONSEQUENTIAL, INCIDENTAL OR SPECIAL DAMAGES, INCLUDING ANY LOST PROFITS OR LOST SAVINGS, EVEN IF A CGI Systems REPRESENTATIVE HAS BEEN ADVISED OF THE POSSIBILITY OF SUCH DAMAGES, OR FOR ANY CLAIM BY ANY THIRD PARTY. Some states or jurisdictions do not allow the exclusion or limitation of incidental, consequential or special damages, or the exclusion of implied warranties or limitations on how long an implied warranty may last, so the above limitations may not apply to you.

5. Governing Law and General Provisions. This Agreement will be governed by the laws of the United Kingdom. This Agreement will not be governed by the United Nations Convention on Contracts for the International Sale of Goods, the application of which is expressly excluded. If any part of this Agreement is found void and unenforceable, it will not affect the validity of the balance of the Agreement, which shall remain valid and enforceable according to its terms. This Agreement shall automatically terminate upon failure by you to comply with its terms. This Agreement may only be modified in writing signed by an authorized officer of CGI Systems.

Unpublished-rights reserved under the copyright laws of the United Kingdom.
CGI Systems s.r.o. U Dejvickeho Rybnicku 10, Praha 6, 160 00, Czech Republic

YOUR ACCEPTANCE OF THE FOREGOING AGREEMENT WAS INDICATED DURING INSTALLATION. IF YOU DO NOT AGREE TO THE TERMS OF THIS CONTRACT YOU MUST NOT CONTINUE INSTALLATION, AND MUST UNINSTALL ANY PORTIONS THAT REMAIN.

2.2 Getting in Touch with CGI

Czech R&D Office

CGI Systems s.r.o., U Dejvickeho Rybnicku 10, Praha 6, Czech Republic.

Tel: +42 (0) 2 243 187 33

Web: www.cgisys.cz

Sales: sales@cgisys.cz

Support: support@cgisys.cz

UK Distributor

Nortech Management Ltd., 45 Milford Road, Duffield, DE56 4EL, United Kingdom.

Tel: +44 (0) 8700 111 992

Channel Islands

ECC Ltd., Bonamy House, St. James Street, St. Peter Port, Guernsey, GY1 2NZ, Channel Islands.

Tel: +44 1481 720028

Index

- A -

About 3

- C -

Contact details 9

- I -

Image Converter 2

ImgConv 2

- L -

License 7

- O -

Operation 2

- S -

Settings 3

Settings & about 2